



Assembly instruction

**FUXTEC**

garden equipment trolley

FX-GW350

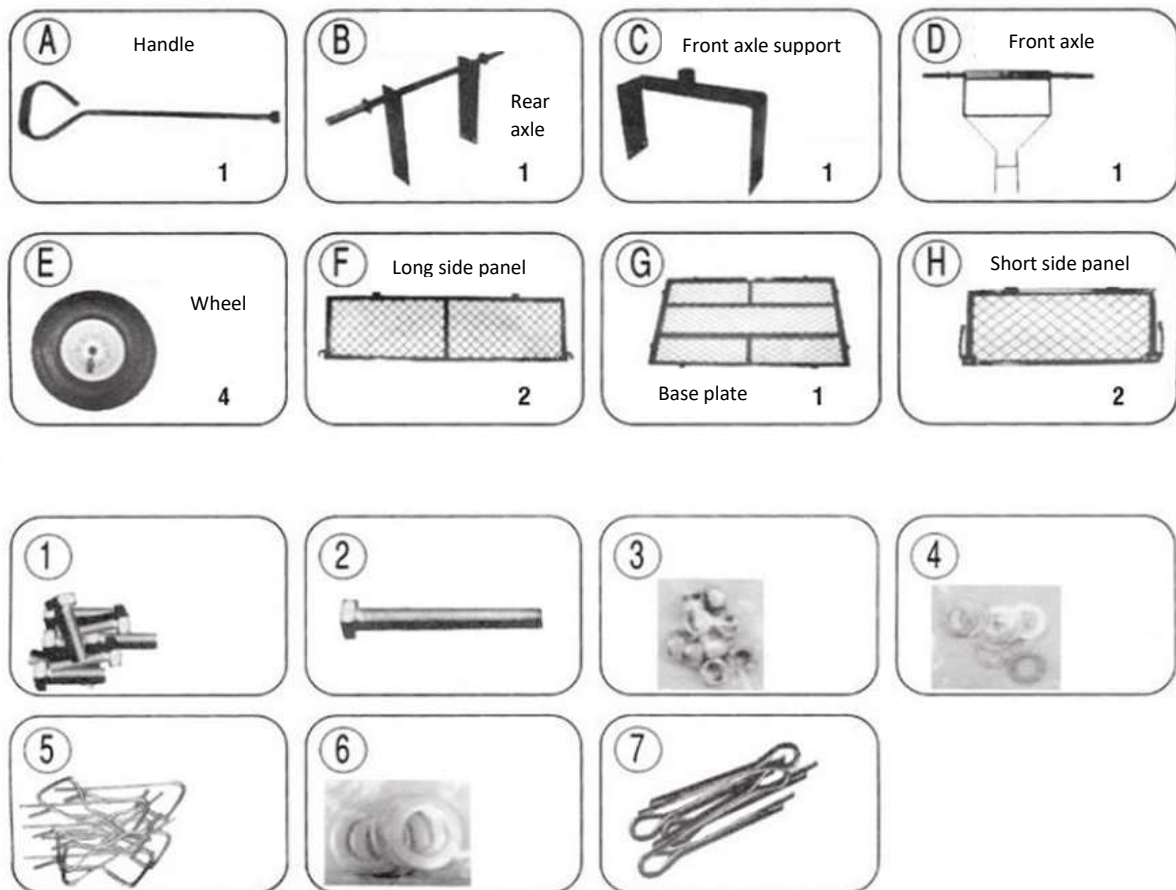
The garden equipment trolley consists of painted steel and air-filled wheels. It is equipped with a non-slip handle and non-slip wheels.

**ATTENTION:** Read this instruction carefully before assembling and using the trolley. This trolley is not a toy! Under no circumstances should children ride or play with this trolley.

**WARNINGS:**

- Watch out for sharp metal edges when opening the product
- Observe the usual precautions when using tools
- Do not inflate the tyres above the intended pressure
- Before use, make sure that all screws are tightly fitted
- Do not use the wagon if it is damaged
- Keep the wagon out of the reach of children

**Scope of delivery:**



**Scope of small parts:**

- 1) Screw short (4x)
- 2) Screw long (1x)
- 3) Nut (9x)
- 4) Discs small (9x)
- 5) Safety pins (8x)
- 6) Discs large (5x)
- 7) Safety pins (5x)

**Assembly:**

Mount the garden trolley, as shown below.

The letters mark the main parts; the numbers mark the small parts

